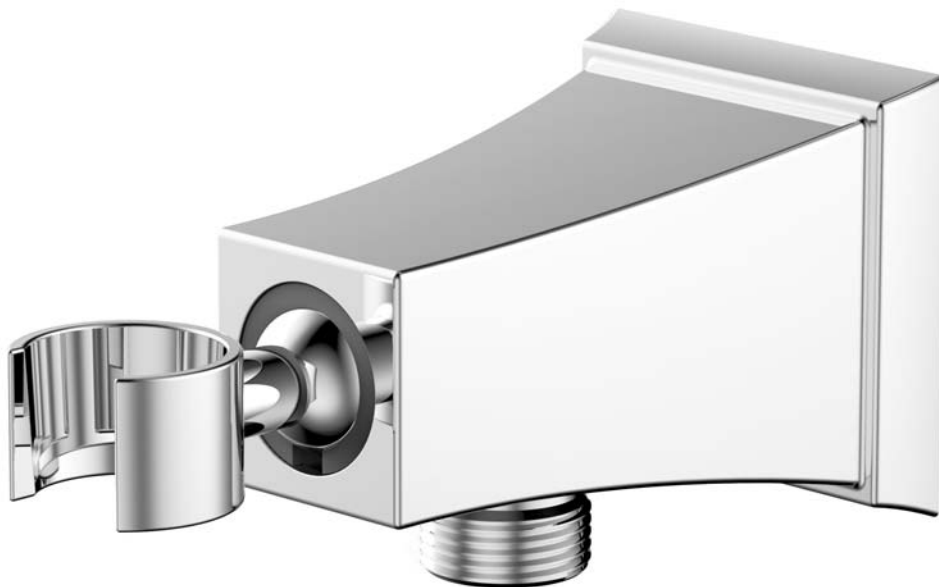


## Installation Instructions

### Series # 14

Handshower Wall Bracket with Outlet and Check Valve



### Tools You Will Need



Adjustable Wrench



Screwdriver

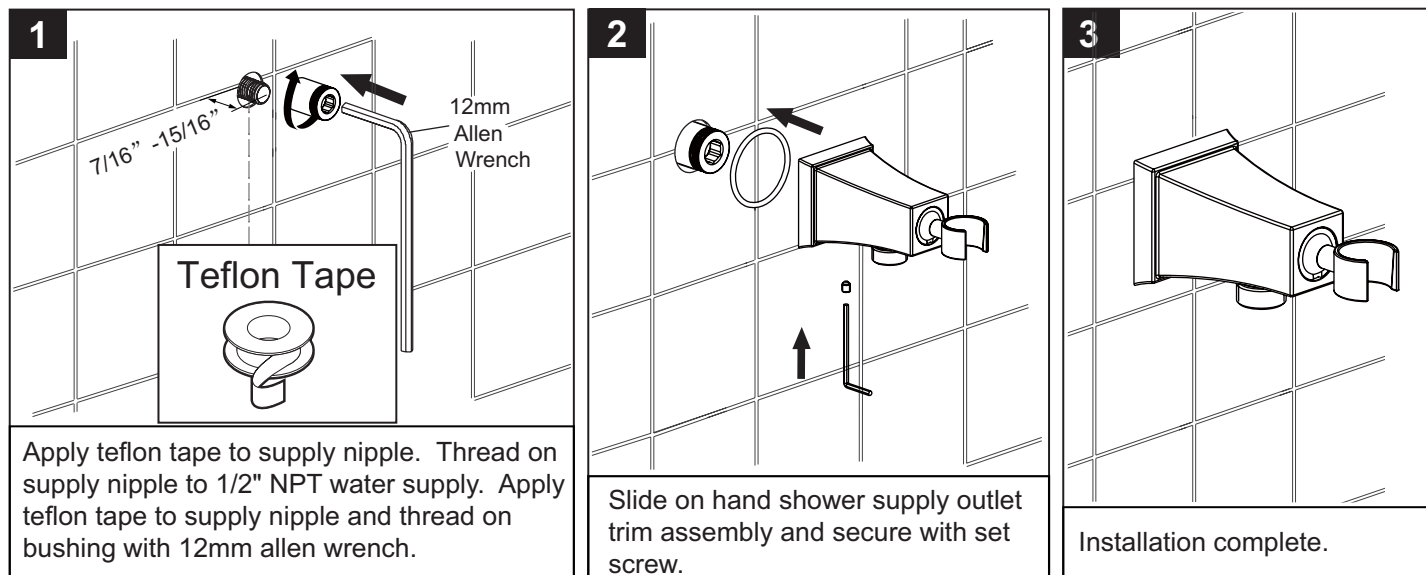


Teflon Tape

For easy installation of your faucet you will need:

- To read all the installation completely before beginning.
- To read all warnings, care, and maintenance information.
- To complete the deck and valve rough-in prior to installing this trim kit.

## Installation Instructions



## Cleaning Instructions

- Only use a soft, dampened sponge or cloth to clean and polish the fixture.
- Wipe fixtures and the immediate areas clean and rinse completely with water immediately after installation and after applying any cleaner.
- If you are using a cleaning compound on or close to the product, please test the compound on a hidden area of the trim to ensure it will not damage the finish.
- Do not allow cleaners to soak anywhere on the product.

## Applicable Standards/Codes

IAPMO certified to meet or exceed the following:

- ASME A112.18.1/CSA B125.1
- Uniform Plumbing Code
- National Plumbing Code of Canada



## Installation Dimensions

